



Sekala's GIS and RS lab

Training and Internships

Sekala provides training and internships on geographic information systems (GIS), satellite image processing and remote sensing to various stakeholders, including the Indonesian Ministry of Forestry, provincial governments and NGOs. Some of these training workshops are linked to the Ministry of Forestry's Forest Monitoring and Assessment System (FOMAS) and aim to initiate discussion among civil society and local forestry offices about data availability, information sharing mechanisms, standards, metadata and analysis. These training sessions also seek to increase awareness about the need for transparency and to mobilize a constituency committed to sharing forest data and information. Other training workshops are more technical in nature and aim to increase capacity to improve data and to carry out GIS analysis.

Remote Sensing and Spatial Analysis Lab

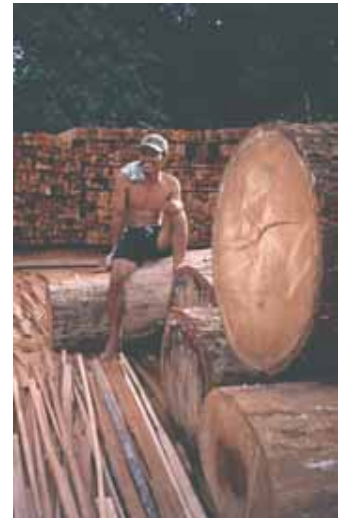
Sekala's GIS lab is equipped with state of the art equipment (including a plotter, GIS software and work stations), qualified GIS technicians and a vast database of spatial data. The lab provides high and low resolution satellite imagery for the Indonesian archipelago and offers a suite of image processing and printing services. Sekala's GIS technicians are currently: working with the Ministry of Forestry to collect, improve and archive spatial data on Indonesian forests; undertaking GIS analysis to calculate carbon emissions resulting from deforestation and forest degradation; developing a spatial fire database for Borneo, Sulawesi and Papua; and assessing Papua's spatial planning process.



PO BOX 3413 DPR
Denpasar, Bali - Indonesia
Email: info@sekala.net
Website: www.sekala.net



Sekala aims to develop realistic, tangible and innovative solutions for environmental problems to bring benefits for local people and the environment.



Expertise

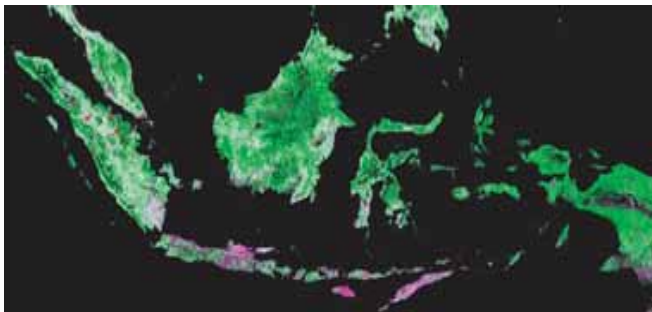
Sekala specializes in forest governance, community mapping, land-use planning, geographic information systems (GIS) and remote sensing in Indonesia. It has extensive expertise on critical forestry issues, such as illegal logging and forest conversion, and is providing analysis for initiatives seeking to reduce carbon emissions through avoided deforestation.

**Realistic, tangible and innovative solutions
for sustainable development**

Forest Monitoring and Transparency (FOMAS)

Sekala has partnered with the Indonesian Ministry of Forestry, the World Resources Institute, the World Bank, Forest Watch Indonesia and other organisations on a forest monitoring and transparency initiative known as FOMAS. This initiative seeks to establish the conditions for transparency in the forest sector by making relevant, reliable, accurate and up-to-date forest sector information continuously available to decision makers and the general public. Sekala has played an integral role in this initiative and is assisting the Ministry of Forestry to collect, improve and archive spatial information on Indonesia's forest resources and forest cover change. This spatial data can be used to improve decision-making; detect illegal logging, fires and forest conversion; inform spatial planning processes; and monitor forest cover change and carbon emissions.

Indonesian forest cover in 2006



Sentani Lake, Papua

Strategic Environmental Assessment in Papua

Sekala is leading a consortium of organizations to carry out a Strategic Environmental Assessment (SEA) for spatial planning in Papua province. The SEA will assist Papua province to develop its spatial plan by assessing the economic, social and environmental consequences of different development scenarios. It will also build the capacity of the Papua provincial government to integrate environmental and social concerns into development planning.

Realistic, tangible and innovative solutions for sustainable development



Facilitating Community Mapping in Papua

Community Mapping

Sekala has facilitated and provided extensive support and training for community mapping — a tool that allows customary people to map their land and forest resources in a participatory way — in Kalimantan and Papua. These maps have been used to negotiate land rights for local communities, inform spatial plans and mitigate land use conflicts.

Nambuiong Customary Area Overlaid with Government Forest Land Use Plan

