

## Remote Sensing and Spatial Analysis Lab

Sekala's GIS lab is equipped with state of the art equipment (including a plotter, GIS software and work stations), qualified GIS technicians and a vast database of spatial data. The lab provides high and low resolution satellite imagery for the Indonesian archipelago, and offers a suite of image processing and printing services. Sekala's GIS technicians are currently working with the Ministry of Forestry to collect, improve and archive data on the legal boundaries and licenses of large-scale concessions, industrial timber plantations, and large-scale agricultural plantations. They are also undertaking GIS analysis which will be used to calculate carbon emissions resulting from land clearing, deforestation and forest degradation.



Sentani Lake, Papua

## Strategic Environmental Assessment

Sekala is leading a consortium of organizations to carry out a Strategic Environmental Assessment (SEA) for spatial planning in Papua province. The SEA will assist Papua province to develop its spatial plan by assessing the economic, social and environmental consequences of different development scenarios. It will also build the capacity of the Papua provincial government to integrate environmental and social concerns into development planning.



PO BOX 3413 DPR  
Denpasar, Bali - Indonesia  
Email: [info@sekala.net](mailto:info@sekala.net)  
Website: [www.sekala.net](http://www.sekala.net)



Sekala aims to develop realistic, tangible and innovative solutions for environmental problems to bring benefits for local people and the environment.



## Expertise

Sekala supports and specializes in creating and supporting strategies for good forest governance, community mapping, land-use planning, Geographic Information Systems (GIS) and remote sensing in Indonesia. It has extensive expertise on critical forestry issues, such as illegal logging and forest conversion, and works on initiatives that seek to reduce carbon emissions through avoided deforestation.

**Realistic, tangible and innovative solutions  
for sustainable development**

## Forest Monitoring and Transparency

Sekala has partnered with the Indonesian Ministry of Forestry, the World Resources Institute, the World Bank, Forest Watch Indonesia and other organisations on a forest monitoring and transparency initiative known as FOMAS. This initiative seeks to establish the conditions for transparency in the forest sector by making relevant, reliable, accurate and up-to-date forest sector information continuously available to decision makers and the general public. Sekala has played an integral role in this initiative and is assisting the Ministry of Forestry to collect, improve and archive spatial information on Indonesia's forest resources and forest cover change. This spatial data can be used to improve decision-making processes, detect illegal logging and forest conversion, monitor forest cover change and carbon emissions, and inform spatial planning processes.



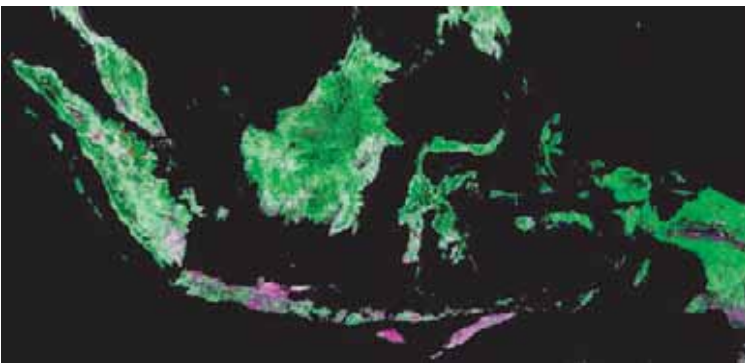
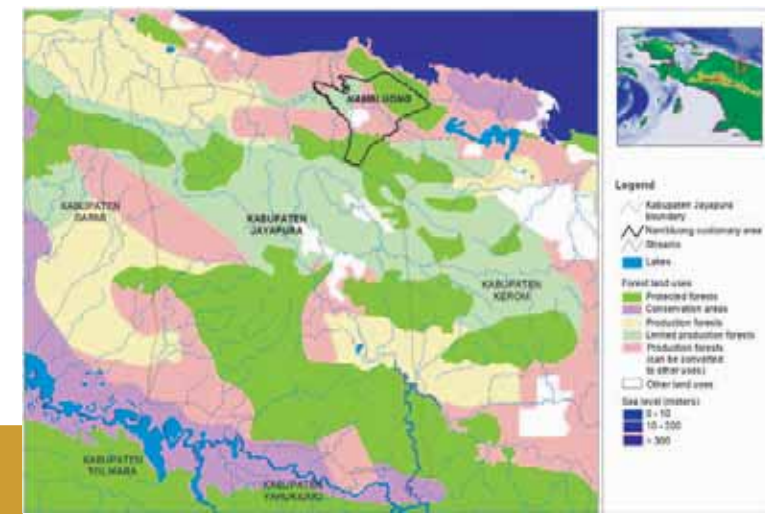
## Training and Internships

Sekala provides training and internships on Geographic Information Systems, satellite image processing and remote sensing to various stakeholders, including the Indonesian Ministry of Forestry, provincial governments and NGOs. Some of these training workshops are linked to FOMAS and aim to initiate discussion among civil society and local forestry offices about data availability, information sharing mechanisms, standards, metadata and analysis. These training sessions also seek to increase awareness about the need for transparency and to mobilize a constituency committed to sharing forest data and information. Other training workshops are more technical in nature and aim to increase capacity to improve data and to do GIS analysis.

## Community Mapping

Sekala has facilitated and provided extensive support and training for community mapping — a tool that allows customary people to map their land and forest resources in a participatory way — in Kalimantan and Papua. These maps have been used to negotiate land rights for local communities, inform spatial plans and mitigate land use conflicts.

Nambuiong Customary Area Overlaid with Government Forest Land Use Plan



**Realistic, tangible and innovative solutions  
for sustainable development**