



SEKALA

PT SERASI KELOLA ALAM

Realistic, Tangible and Innovative Solutions for
Sustainable Development

www.sekala.net



info@sekala.net



+623614740074
+623614740090



Jl. Subak Sari, Gg. Mango No.1
Tegalgundul, Tibubeneng, Kuta Utara
Kab. Badung, Bali 80361
Indonesia

“ Sekala aims to develop
realistic, tangible and
innovative solutions for
environmental problems to
bring benefits for local
people and the environment. ”



ABOUT SEKALA

Introduction

SEKALA was established in 2005 and operating under Business Identification Number No. 8120108851364. SEKALA specializes in forest governance and law enforcement, conservation, community mapping, spatial land use planning, environmental and social assessment, resource valuation, land management, geographic information systems (GIS) and remote sensing in Indonesia. It has extensive expertise on critical environmental issues, such as high conservation value forest (HCVF) identification and management, sustainability, illegal logging, spatial planning and forest conversion; and it has provided analysis to a number of initiatives seeking to reduce carbon emissions through avoided deforestation and degradation (REDD).

SEKALA has established a wide network in several provinces, including Papua, Papua Barat, West Kalimantan, East Kalimantan, North Kalimantan, South Kalimantan, Riau, Jambi, South Sumatra, Bali and Java. SEKALA is also engaged by various organizations

to assist with participatory mapping processes that seek to mitigate and resolve conflict.

SEKALA aims to develop realistic, tangible and innovative solutions for environmental problems. It also aims to offer balanced solutions that bring benefits for local people and the environment. These solutions ultimately seek to achieve social and environmental harmony. Our clients include donor agencies; local, national and international NGOs; government agencies; research organisations and companies. We have developed a unique ability to liaise with multiple stakeholders to mitigate conflicts and provide results.

SEKALA's team is comprised of mapping specialists, project managers, analysts and technical experts with a wide range of expertise in natural resource management and development disciplines, spatial planning, land management and mapping.

Why SEKALA?

SEKALA have a **wealth of combined knowledge and experience** and have worked extensively with **multiple stakeholders** and able to access a **broad network of stakeholders** (including community, NGO, private and government stakeholders) at site, district, provincial and national level.

SEKALA has **quality assurance mechanisms** which supported by an experienced and well-established statistical analysis, GIS and remote sensing team and highly qualified core team consist of local and international expert in the field of environmental management and development, and project management. These teams will ensure all work is undertaken to a high standard.

SEKALA team always observe **ethical guidelines** during the field work, such as

- Ensure that both the formal and informal environmental and socio-economic mechanisms are examined.
- Be aware of conflict and gender sensitivities and adopt the principles and practices of participatory dialogue for all consultations

- Respect local cultures and values and ensure behaviour do not violate norms and values
- Ensure adequate safety during conducting and attending the consultations and other activities
- Ensure objectivity and independence by conducting the consultation in an impartial manner
- Pay attention to vulnerable group throughout the process
- Comply with all relevant laws, ordinances, rules and regulations.

SEKALA require all team personnel to comply with existing **policies and procedures** that have been put in place to promote **good practice**, such as:

- Due diligence, fraud and anti-corruption
- Supplier management
- Safeguarding
- Whistleblowing
- Bullying and Harassment
- Recruitment including conflict of interest mitigation and management
- Procurement/tendering
- Sustainability
- Environmental/Social Impacts

EXPERTISE & SERVICES

Community Mapping Support

Community mapping is a tool that allows customary people to map their land and forest resources in a participatory way. It can also be used to mediate land use conflicts and to provide an avenue for stakeholders to negotiate and agree upon spatial plans and customary boundaries.

SEKALA has provided community mapping support in Indonesia.

It has also helped to improve community mapping methodologies and to support community mapping networks throughout the archipelago.

Program Management

SEKALA aims to provide quality program management support for Indonesian organizations working on environmental and natural resource management issues. It primarily assists organizations to:

- Develop proposals
- Conduct baseline appraisals
- Develop participatory Monitoring and Evaluation schemes
- Map out influential and important stakeholders.
- Write project reports



Satellite Image Provider, Spatial Data Management and Analysis

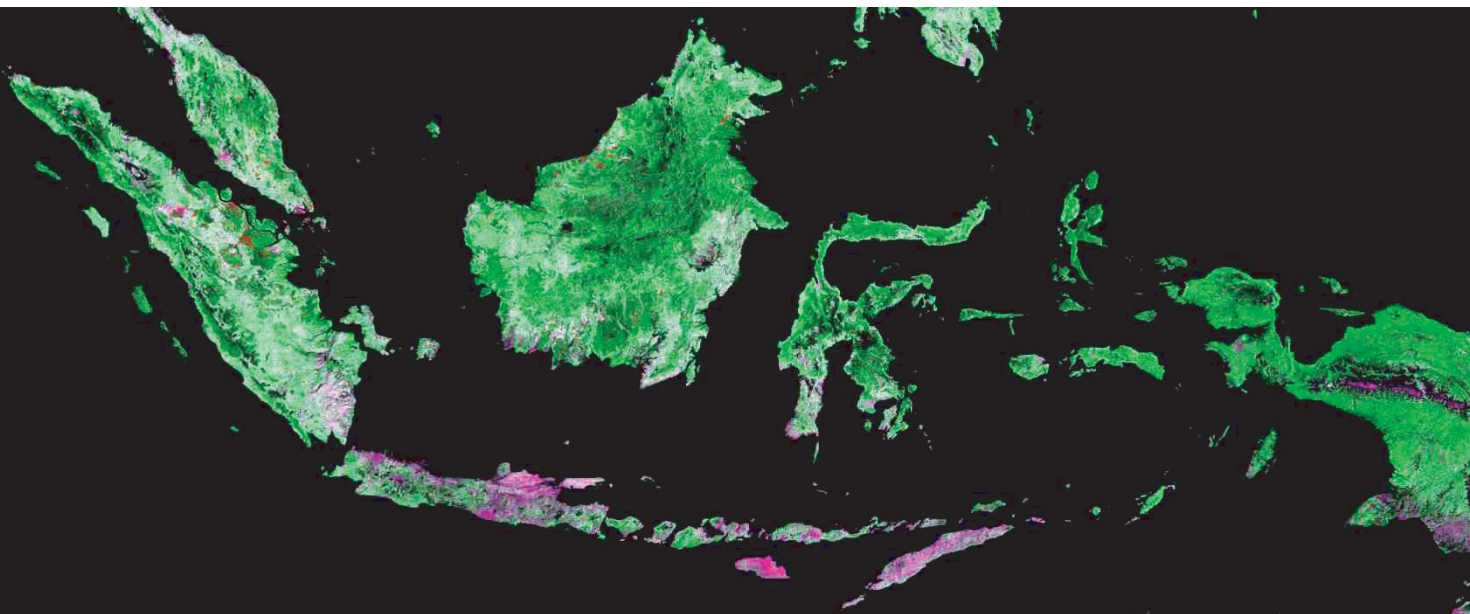
The rapid development of, and ease of access to, high quality satellite imagery and inexpensive and accurate Global Positioning System (GPS) navigation devices can allow policy makers to monitor forest cover and to make informed spatial plans that facilitate sustainable development.

SEKALA uses satellite data and spatial analysis to provide accurate information about Indonesia's forest cover and land cover change. We assist policy makers to make informed decisions about spatial plans and concession allocation. We encourage policy makers to take into consideration High Conservation Value Forests and carbon rich forests and soils.

SEKALA's remote sensing and spatial analysis lab is equipped with state of the art equipment, qualified GIS/remote sensing technicians and a vast database of spatial data. The lab provides very high, medium and low resolution satellite imagery and offers a suite of image processing services.

Peat Protection and Management

SEKALA undertakes considerable research, analysis, field works and consultation process on critical peat land issues to develop peat protection and management plan in Pelalawan District.





Research & Analysis

SEKALA undertakes considerable research and analysis on critical natural resource issues such as illegal logging, customary right, land tenure, resource valuation, jurisdictional approach on sustainable land uses, bioenergy, agriculture, oil palm expansion and forest conversion.

Fire Detection & Management

Fire is commonly used in Indonesia to clear land for swidden agriculture and large-scale oil palm developments. While fires can be contained they have often become widespread and damaging. SEKALA collects satellite and spatial data on forest and land fires and is able to provide ground-truthed data on fire hotspots. SEKALA also analyses this data to develop realistic strategies that can be used to reduce forest fires in Indonesia.

REDD+ Support

Curbing deforestation in Indonesia is a highly cost-effective way to mitigate climate change. Avoided deforestation can prevent carbon being released into the atmosphere from the burning and logging of forests. Conserved forests also have the potential to absorb global emissions into their biomass, soils, and products. Moreover, avoided deforestation efforts offer additional benefits, such as protecting biodiversity, preventing soil erosion and protecting the livelihoods of forest dependent populations.

SEKALA has worked with REDD+ since its inception in Indonesia and are able to provide analytical support for REDD+ strategies and methodologies, and provide support, information and training on REDD+ to various relevant stakeholders.

Provision of Baseline Data and Cadastral Maps

SEKALA has developed a systematic methodology to compile, collect, analyse and improve statistical and spatial data relevant for REDD+, natural forest management and spatial planning. SEKALA has developed proficiency in identifying data inconsistencies, harmonising spatial data and facilitating

consensus about data discrepancies through multi-stakeholder dialogue. SEKALA has been engaged by the United Nations Development Program (UNDP) and Indonesia's REDD+ Agency to undertake this work in the provinces of East Kalimantan, Central Kalimantan, Papua and West Papua.



Training and Internships

SEKALA provides training and internships on Geographic Information Systems (GIS), satellite image processing, remote sensing, spatial planning, REDD+ and community mapping to various stakeholders, including government officials, Non Government Organisations (NGOs), private enterprise and local

communities. Some of these training workshops aim to initiate discussion among civil society and local forestry offices about data availability, data inconsistencies, information sharing mechanisms, standards, metadata and analysis.

Conflict Mediation

Conflicts over natural resource use and management are common in Indonesia as large-scale concession boundaries often overlap with customary lands.

SEKALA uses conflict mediation, community mapping, and other services to help to resolve these conflicts.

Strategic Environmental Assessment

Strategic Environmental Assessment (SEA) is a systematic decision support process, aiming to ensure that environmental and other sustainability

aspects are considered in policy planning and programme making. SEKALA has developed experience in carrying out SEA in Indonesia.

Our Clients



What Our Clients Say?

'PT SEKALA demonstrating excellent support and delivered quality work in an efficient manner. PT SEKALA sometimes exceeded requirements and added additional value to the project.' (M. Sigit Widodo, former Associate Director of Participatory Land Use Planning for MCA-Indonesia).

'SEKALA has performed excellently in facilitating stakeholder endorsement for data collection and management even in difficult transport and logistical challenging areas.'
'SEKALA has also performed well in conducting the analysis needed and successfully incorporated the reviewer inputs into a condensed final delivery of required reports.' (Heracles Lang, former Senior REDD+ Advisor at UNDP).

'We attest that the mission (or the project) was carried out in a professional manner and met our expectations.' (Rahajeng Pratiwi, former Associate Operations Officer, IFC).

'Without exception, SEKALA has performed well and at times under difficult circumstances such as lack of local government buy in the national processes and the resulting institutional politics.'
'Particularly well under such circumstances, maintaining high level of professionalism and assuring that the work gets done in a participative and effective manner.' (Paul C. Fay Jr., former Indonesia Programme Coordinator, CLUA).

'SEKALA has performed well to coordinate and to support NGOs on customary rights mapping and support them in advocating the right at the decision making process, and until the date have been completed satisfactory and the related reports and outputs submitted and approved.' (Steve Rhee, Senior Program Officer, Ford Foundation Indonesia).

List of selected projects

2020	<ul style="list-style-type: none"> + Develop the Peat Ecosystem Protection and Management Plan Documents for Pelalawan District. + Historical land cover change at selected customary land and local community. + Capacity development for effective forest monitoring in Papua and West Papua Province
2019	<ul style="list-style-type: none"> + Support the Development of Green Development and Social Forestry at the District Jurisdictional Level in Ketapang, Sintang and Siak. + Analysis of Fire, Land Use and Cover Change History at Oil Palm Concession in Central Kalimantan.
2018	<ul style="list-style-type: none"> + Context Analysis, Indonesia: Take stock of the current status of land and forest rights in Indonesia.
2017	<ul style="list-style-type: none"> + Supporting Community Mapping and Customary Land Right in Spatial Planning and REDD+ Decision Making in Indonesia: Capacity building for NGOs and local government. + Participatory Mapping and Planning (PMap) 8, Village Boundary Setting in Riau: Facilitate 83 village boundary delineation and demarcation.
2016	<ul style="list-style-type: none"> + Support the Development of Green Development at the District and Provincial Jurisdictional Level in Merauke, Papua: Facilitate jurisdictional approach for sustainable land uses.
2015	<ul style="list-style-type: none"> + Support the Establishment of Baseline Information and Analysis of Land Investment and Green Development Options in Malinau. + Support for Community Mapping as a Means for Ensuring the Rights over Forests and Other Natural Resources are Acknowledged and Incorporated into Government Spatial Planning Process.
2014	<ul style="list-style-type: none"> + Facilitating Community Mapping and Developing Proposed Forest Estate Zone in Malinau. + An Inventory of Available Data Relevant for Sustainable Oil Palm and HTI Development in Indonesia. + Provision of Baseline Data and Cadastral Maps for Papua and West Papua Province. REDD+ preparation at the provinces.
2013	<ul style="list-style-type: none"> + Promoting CBFM and Customary Land Rights in Spatial Planning and REDD+ Decision Making Process. + Support for High Carbon Landscape Information Development in Indonesia. + Governance for the Reduction of Land Use Changes. Study on the 'Bioenergy Commodities and Their Implications for Land Use Change in Indonesia'.
2012	<ul style="list-style-type: none"> + Provision of Baseline Data and Cadastral Maps for East Kalimantan. REDD+ preparation at the province. + Initial Support to Spatial Planning and Low Carbon Development in Papua. + Assessment of Community Engagement on Timber Plantation Concession of PT MHP, South Sumatera. + Threat Analysis of Marine Protected Areas of North Bali.
2011	<ul style="list-style-type: none"> + Provision of Baseline Data and Base Map Assessment for Central Kalimantan. REDD+ preparation at the Pilot Province. + Vulnerability Assessment: Field evaluation for climate change vulnerability assessment. + Assessment of Community Engagement on PT MHP Concession.
2010	<ul style="list-style-type: none"> + Building Center of Excellence on Forestry and REDD Issues in Indonesia. + Sub-National Data Collection and Spatial Analysis for Assessing Impact of Forest Conversion Moratorium.
2009	<ul style="list-style-type: none"> + Palm Oil, Timber and Carbon Offset (POTICO): Identify degraded land and facilitate land use change to swap oil palm concession. + Governance Forest Initiative: Develop forest governance indicators.
2008	<ul style="list-style-type: none"> + Mapping CBFM for Sumatera, Kalimantan and Java. + Technical Support for Berau Forest Carbon Program.
2007	<ul style="list-style-type: none"> + Strategic Assessment for Spatial Planning in Papua Province.
2006	<ul style="list-style-type: none"> + Support Establishment of Forest Monitoring System in Indonesia.